

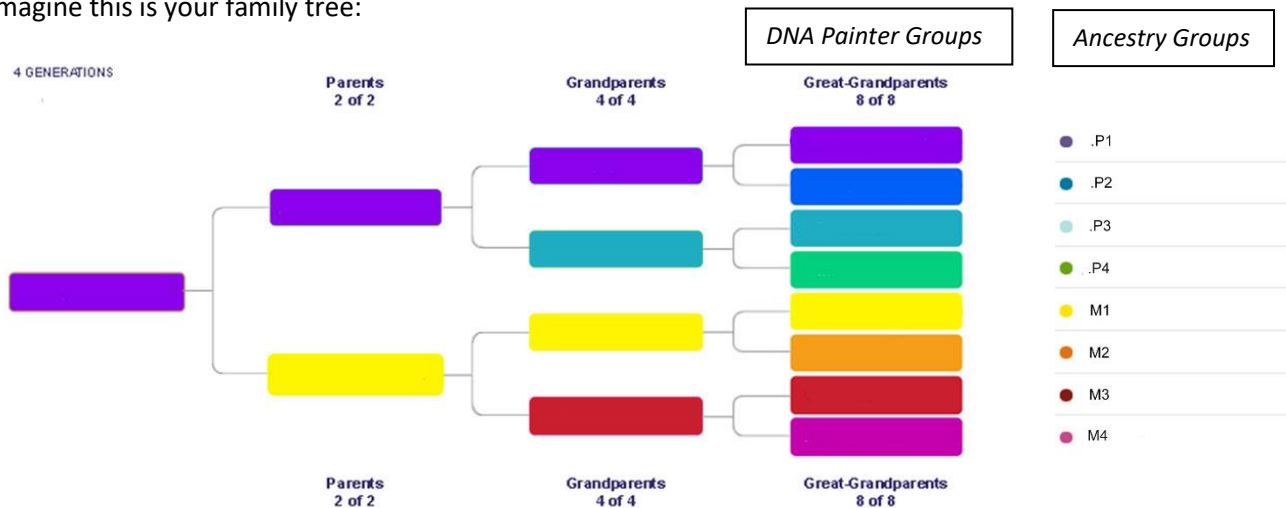
Grouping your DNA Matches (by Joy Smith, with Leisa Byrne's help!)



This is a really important part of your analysis of your DNA results.

We will be going on to look at DNA Painter later in the project, and we'll be using grouping for it as well as for Ancestry, so it makes sense to use the same colours for the same groups to be consistent and so that we get used to the colour associated with a particular group.

Imagine this is your family tree:



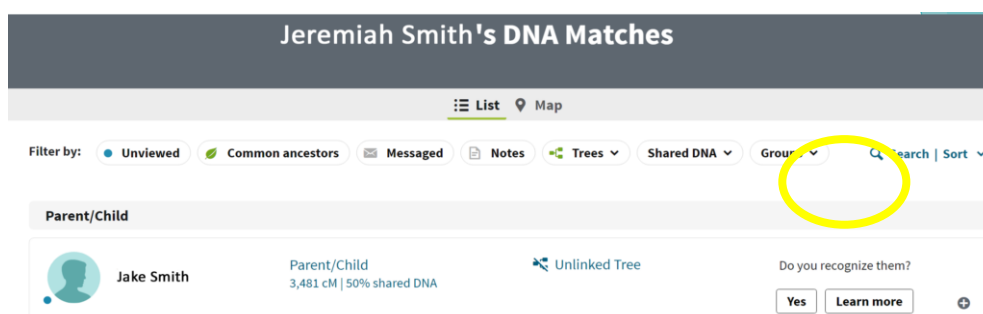
The column where you would have your 8 Great Grandparents named shows the colours you should use for each of the 8 surnames of your Great Grandparents when using DNA Painter. The very last column of dots beside the tree shows the way you would use the same colours for your Ancestry groups, as does this chart:



So these colours work with both DNA Painter and Ancestry, and when we are discussing groups, we will all know which colours mean which one of the 8 great grandparents. Consistency is the key to all of this! If we all use these colours, there will be no confusion.

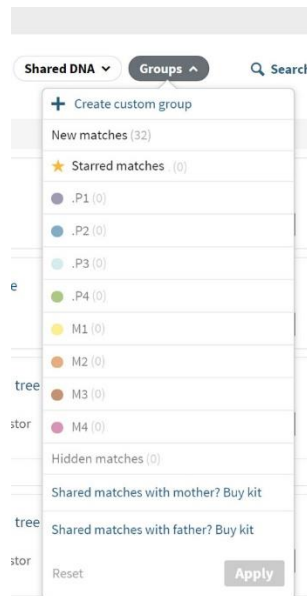
We can set similar colours in Ancestry for our groupings, and we can label them .P1, .P2, .P3, .P4, M1, M2, M3 and M4. We use a dot in front of the P1, P2, P3 and P4 because Ancestry automatically puts your list of groups into alphabetical order and so would put the M groups before the P groups. Putting the dot in just before the P solves that problem! You can also add in the surname of each of your grandparents beside the P or M label.

You set these groups and colours by going to your listing of DNA matches and clicking on the 'Groups' tab at the right end of the menu:



You will get a drop down menu and you click on Create Custom Group. Start with picking purple for the colour and label it .P1 and add the relevant great grandparent surname e.g. .P1 Smith. Then do the rest of the colours and labels as shown in the Ancestry Groups above, using Create Custom Group for each one. The Ancestry colours and the DNA Painter colours don't match exactly, but they're close enough! You can also add a group coloured mauve/grey and labelled 'Unknown' for those matches not yet identified.

Once you have your group colours created and labelled, when you click on 'Groups' it should look like this, with the addition of your own Great Grandparent surnames beside each one:



(Starred matches are for you to choose to label yourself – if you come across a match that you haven't quite worked out and want to come back to, you could star it, for example.)

In Ancestry, once you know a match is on the maternal or paternal side, you can click on 'Do you recognise them?' (see Jeremiah Smith's DNA matches on previous page), then 'Yes' and then label them as whichever side they belong to, even though you don't know which actual branch of your tree they are from, and you don't know their exact relationship to you.

When you click on 'Yes', a box will open up (shown below on the left) and you will click on whichever side is correct, then click 'Next'. On the second box which opens up, you will click on 'I'm not sure', as you don't know how you are related. The last box which opens up just asks you to confirm your choice. Once you find out the exact relationship you have and know the line of your tree they come from, you can go back into this and record the relationship and assign them to the correct colour group.

